

Dear Parent/Carer,

I am extremely relieved and excited to be sending this pack home today. This pack includes everything you will need to know about the full return to school in September. Communication with families is very important to us so please ensure we have up to date mobile phone and email addresses. We can only communicate you on a regular basis using electronic formats so it is vital we gain these details from you.

It is essential that you read this pack carefully and that you talk to your child about the new routines and rules. Where possible, we have included pictures and examples. We need your help to make the return to school as smooth as possible and as safe as possible for all. Please remember that, should the situation change (for the better or worse), we will need to amend this plan.

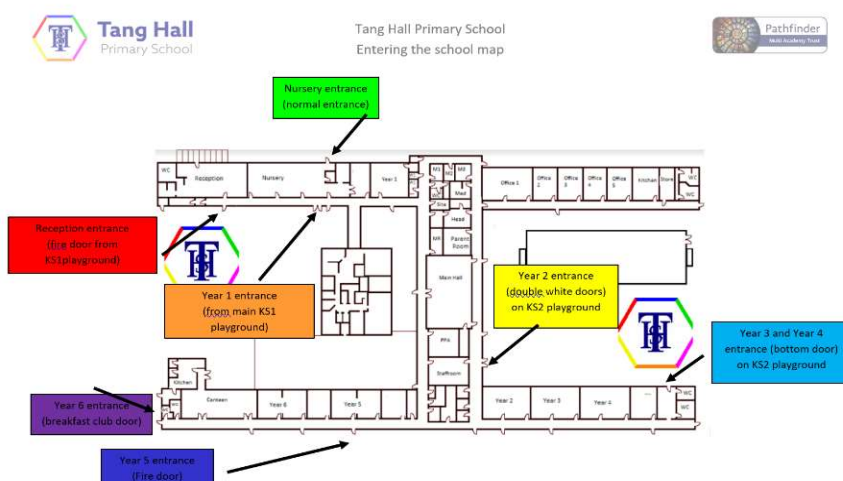
1. GROUPS and TIMETABLE

Your child will be taught with their whole class. Some classes will be teamed up with another class to form a 'social bubble'. This means that classes will be taught separately but may come together with their social bubble for lunch.

Days in school	Please arrive at	Please collect at	Can your child walk home?	Does your child have medication?
EVERYDAY!	Between 8:30-9:00	From 2:45- 3:15	Only pupils in Y5 and Y6 can walk home alone. The school will be communicating with Y5 and Y6 parents about how to give permission for this.	This must be brought into school via the office as usual.

2. ENTRY and EXIT ROUTES

All children will be entering and exiting from school using a variety of doors to try and reduce large groups needing to congregate. Please see the map and table below which records where your child/ren need to be dropped off. We have increased the start and end of the school day to ensure all families have sufficient time to drop siblings off and collect them. If there is a queue, please join the relevant line. Parents, please do not congregate on the playground as we will have to ask you to move on to allow others in.



3. DINNERS

Our dinner provision will return as usual but the following measures have been put into place to keep everyone as safe as possible:

- ✓ Dinners will run on a rota (as usual) in the hall.
- ✓ Staff will clean the hall between sittings.
- ✓ Only Parent Pay can be used to collect payment.
- ✓ The menu may be limited during the first week as the catering team move back to full operation.

Any previous dinner debts, which were put on hold during lock-down, will be added to parent pay accounts including that of siblings. **You will be required to cover any debts before being able to book dinners for your child.** Please do not put us in the position of having to call to chase debts. Pathfinder Multi- Academy Trust has a policy and process for retrieving debts which can result in Social Services involvement. If you are having any problems using parent pay or activating your account, please contact the school office. Activation codes are available at the office.

4. After School Club and Breakfast Club (paid provisions)

A child may attend after school club and our new paid breakfast club as well as attending school in their learning bubble. However, we are encouraged to limit multiple bubbles and therefore ask that you try to make plans to minimise the use of these clubs if possible.

From September, both Breakfast and After School Club will be available to all pupils as usual but the number of places will be reduced.

Please note that charges for these clubs will resume from Wednesday 9th September. Bookings are now being taken via the school on 01904 555271 or office@tanghall.pmat.academy.

If you do not need a paid facility, we have our new Early Birds offer which will be running from Wednesday 9th September. Simply turn up at your classroom entry point (as shown on the map above) at 8:30am and you will be welcomed by a member of the staff team. The children can move down to the classroom and will be offered a light healthy breakfast before school starts at 8:50am. This offer is free.

5. UNIFORM

From September, all pupils will be required to wear full uniform. Please fill in the online survey so that we can give you a free jumper or cardigan. You will be given a time slot so that you can come and collect your item from school. We will email you in the holidays with a time slot for collection on Monday 7th September or Tuesday 8th September.

To hopefully have your jumper or cardigan ready in September, please complete the survey by 31st July. Any returns after this date will still gain the clothing but it may not arrive in time for a September start.

PLEASE COMPLETE THE SURVEY HERE:

<https://forms.gle/3PcipzaHJ2P3c6u88>

If you cannot access the internet or the survey, we are happy to help you. Please telephone school with your National Security number to hand and date of birth and we will access the survey on your behalf.

Uniform can also be ordered online using ParentPay. Please contact the office if you need support with this.

6. CLUBS

Clubs will not be running for the first few weeks while the team adjust and ensure that the wellbeing, teaching and learning of the pupils is made a priority. When clubs do resume, this will only be in set bubbles.

7. HOME LEARNING

In the event of the school partially closing or going into full closure, we will continue the use of Seesaw and our school website for home learning. Please continue to access these regularly so that you are familiar with them if required to use them again. Please also let us know if you have any access issues.

8. HOMEWORK

We will be sending home reading books as per usual. When books are returned to school or completed, we will store them for 72 hrs, to reduce the risk of contamination, then returned to the shelves or classrooms.

9. NEW TEMPORARY SCHOOL RULES

Introduction and rationale

Our school will be operating in exceptional circumstances. This includes unusual working patterns, unfamiliar day to day routines and new health and safety routines. In order to keep staff and pupils as safe as we can, and in line with the DfE guidance on returning, we have amended our school rules to incorporate necessary restrictions and expectations.

Additional temporary school rules

In order to keep yourself and others safe, you will be allowed to attend school if you can follow these rules:

- Stay where you are asked to be at all times
- Follow instructions the first time (for younger children, after a warning)
- Only touch your own resources.
- Keep your hands to yourself and do not touch others
- Avoid spitting, shouting or putting objects in your mouth
- Follow the handwashing and hygiene plan set by staff



Failure to comply

If a child fails to follow these rules, and it is deemed by those monitoring risk assessment in school, the following will occur:

- Your child will be guided to a quiet safe space away from others
- You will be contacted
- You will be asked to collect your child
- We will discuss future provision for your child with you.

Failure to keep safe may result in your child not being able to access face-to face learning and alternatives may be offered by the school.

DFE Implementing Protective Measures in Education and Childcare Settings

<https://www.gov.uk/government/publications/coronavirus-covid-19-implementing-protective-measures-in-education-and-childcare-settings>

DFE Planning Guide for Schools:

<https://www.gov.uk/government/publications/preparing-for-the-wider-opening-of-schools-from-1-june/planning-guide-for-primary-schools>

10. RESTRICTIONS

✓ YES	X NO
<ul style="list-style-type: none"> • Respect the queuing system when dropping off and collecting your child. • Arrive promptly for drop off and collection. • Wash hands several times a day. • Have fresh air with the teacher and class bubble. • Have own lunch time space. • You may bring a packed lunch. • You may bring siblings to collect children. • Bring a coat. • Bring sun cream/ hat. • Please walk to school if possible. • Wear full uniform and bring PE kits 	<ul style="list-style-type: none"> • Bikes- the bike sheds will remain locked. • Bags (book bags are fine). • Pencil cases. • Dummies. • Toys. • Parents entering the school building. • Mixing or changing of groups outside of your bubble. • Whole school playtimes. • Sharing resources. • Parents congregating in groups.

11. CONTACT US

Please do not visit the school office unless you have an appointment. Please telephone or email the office. Visitors, volunteers and workmen will be reduced during the first term to minimise the number of people on site at all times.

12. ATTENDANCE

From Wednesday 9th September, we will be returning to our usual attendance protocol. This will also include the government fining scheme for the non- return to school following lockdown. Please get in touch if we can support you with attendance. We would like to work with you to support your child in returning to school successfully.

You can telephone the school office or alternatively, email:

Miss Murray, Attendance Officer, mmurray@tanghall.pmat.academy

Mrs Slack, Headteacher, head@tanghall.pmat.academy

13. CATCH UP

We will be able to access government funding for catch up programs. We will be using the first week or two of September to settle the children in, see where they are and what gaps they have. During this time, we will be working on a program to support catch up within the curriculum. If you think that there is something specific you think we need to know about your child in terms of catch up academically or for wellbeing, please telephone the school to speak to a member of staff.

The very best thing you can do to support catch-up is to make sure your child attends school every day and that they read to you (or alone) every day.